

# Technical Information

## Skyclimber

Page 1

Installation instructions EN 1176-1

Maintenance instructions EN 1176-1



03.03.16

## General

The described work is to be carried out by qualified specialists (a minimum of 3 persons). Anchoring of the lattice equipment is made on a hot-galvanized square tube frame. Concrete work is not necessary making any possible change of location quite easy without removing foundations or having them remain in the earth.

## Dimensions

Equipment space	Ø 5,00 m
Fall space	1.50 m
Minimum space	Ø 8,90 m
Height	5.00 m

## Age group

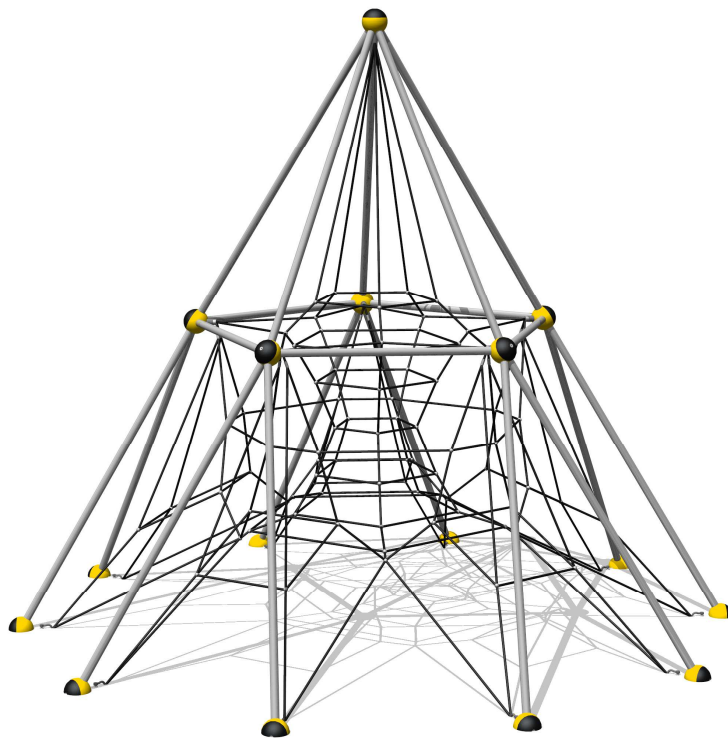
From 4 years of age

## Number of users

Approximately 36 children

## Maximum free fall height

2.60 m



The Skyclimber

## Ground conditions

We refer to EN 1176-1 with respect to the ground conditions in the playing area. Sand, wood chippings, gravel and synthetic fall protector with HIC test are accordingly permitted. We recommend a 400 mm thick bed of gravel (grit size 2 – 8 mm) or a sand filling (grain size 0.2 – 2 mm). When applying a synthetic fall protector it must be guaranteed that all positions relevant for maintenance (refer to the maintenance instructions on Pages 12 and 13) be accessible at all times. If necessary consult SMB.

## Table of contents

<b>1. Assembly tools</b>	Page	3
<b>2. Assembly of the anchor frame</b>	Page	3
2.1 Part description	Page	3
2.2 Assembly of the anchor frame parts	Page	3
2.3 Alignment of the anchor frame	Page	4
<b>3. Assembling the equipment</b>	Page	5
3.1 Views of equipment	Page	5
3.2 Screwing the lattice equipment together	Page	5
<b>4. Space net</b>	Page	6
4.1 Unpacking the space net	Page	6
4.2 Preassembly of the space net	Page	7
4.3 Tensioning the space net	Page	7
4.4 Securing the space net	Page	8
<b>5. Maintenance instructions according to EN 1176-1</b>	Page	8
5.1 Visual routine inspection	Page	8
5.2 Operative inspection (half yearly)	Page	9
5.3 Main inspection (yearly)	Page	9

## 1. Assembly tools:

### Supplied tools:

- 1 Special box spanner Size 32 with angled extension
- 1 Box spanner Size 32 with extension
- 1 Box spanner Size 30
- 1 Allen key Size 10 with extension
- 1 Rope pulley
- 1 Bit for safety screws

### Tools additionally required:

- 2 Spanners Size 24
- 1 Spanner Size 30
- 1 Double ladder approx. 2.5 m long
- 1 Double ladder approx. 4 m long

### Recommendation:

- 1 Ratchet with Attachment 32 (normal assembly tool)

## 2. Assembly of the anchor frame:

### 2.1 Part description

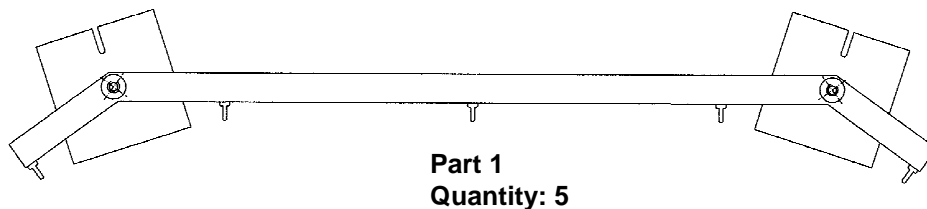


Figure 1

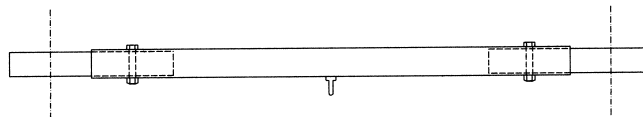


Figure 2

### 2.2 Assembly of the anchor frame parts

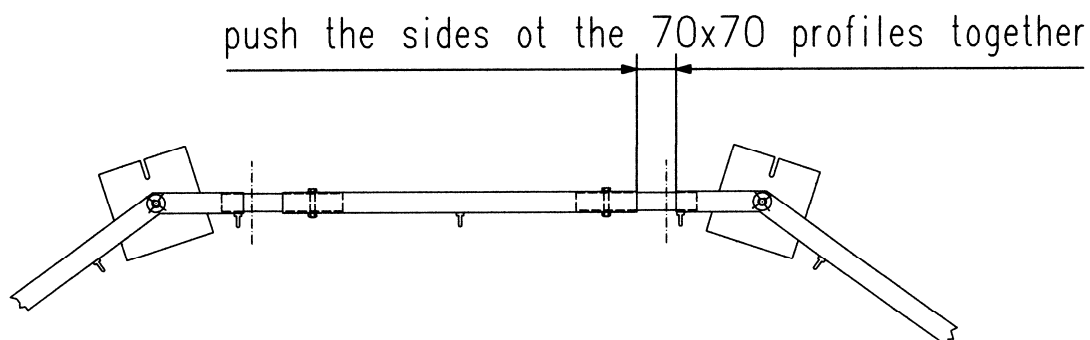


Figure 3

### 2.3 Alignment of the anchor frame

If all 10 ground anchors are fixed into each other as shown in **Figure 3** then these are screwed together with the 10 supplied screws (M16x85) and nuts. This frame must be positioned in the ground at a depth of 470 mm under the playing level (**Figure 4**) and, at the same time, be aligned horizontally and aligned in diameter. With this frame perfect screwing of the frame tubes and the hollow balls is guaranteed. **Note:** It is imperative that you observe the positioning of the slide and the hammock when assembling and aligning the anchor frame (refer to Layout Plan II).

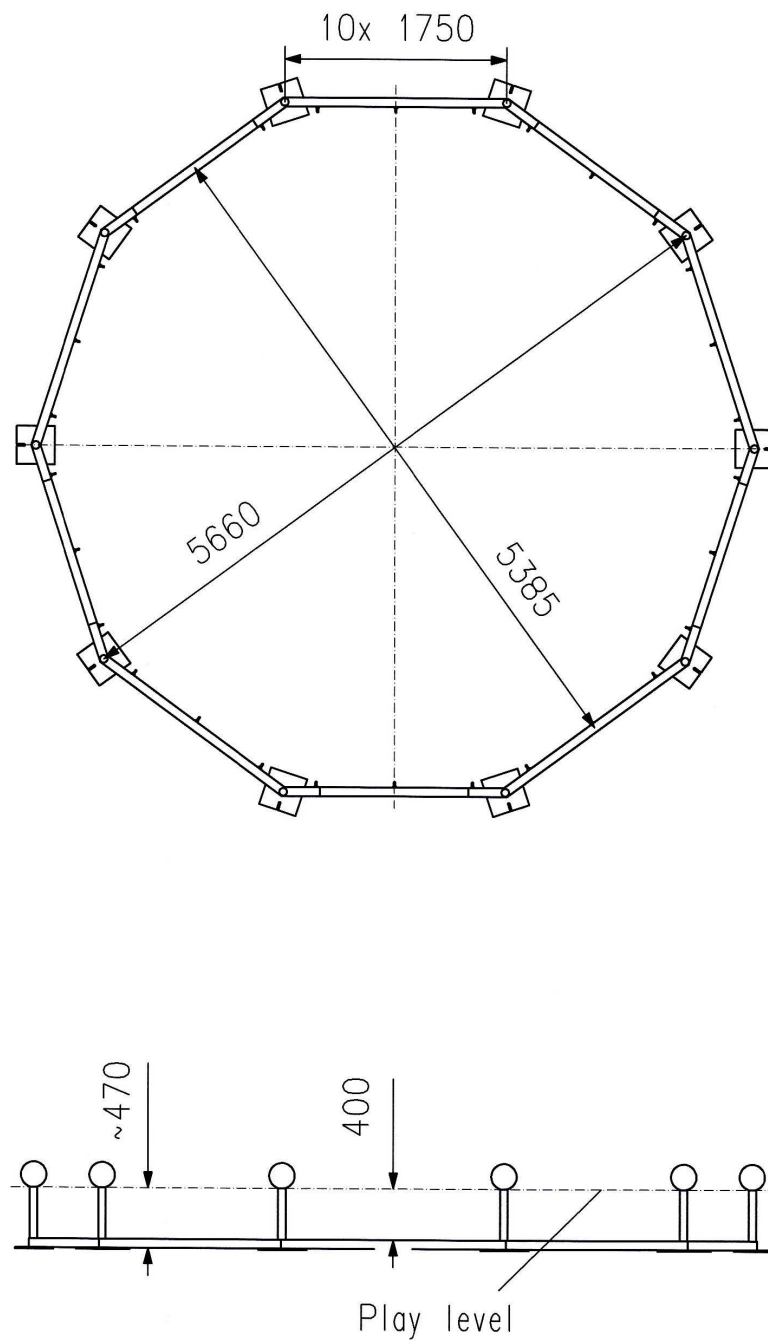
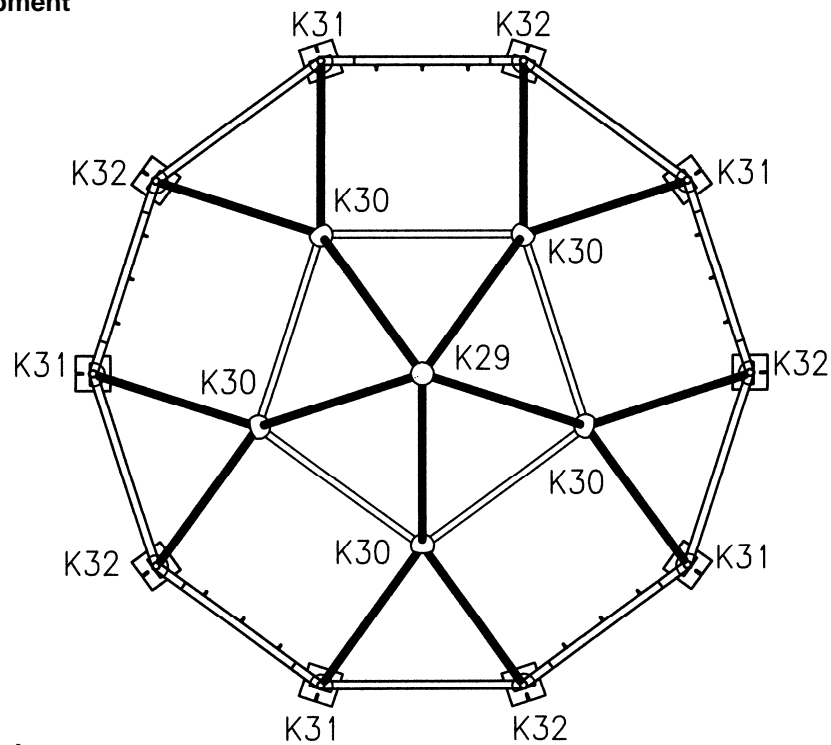


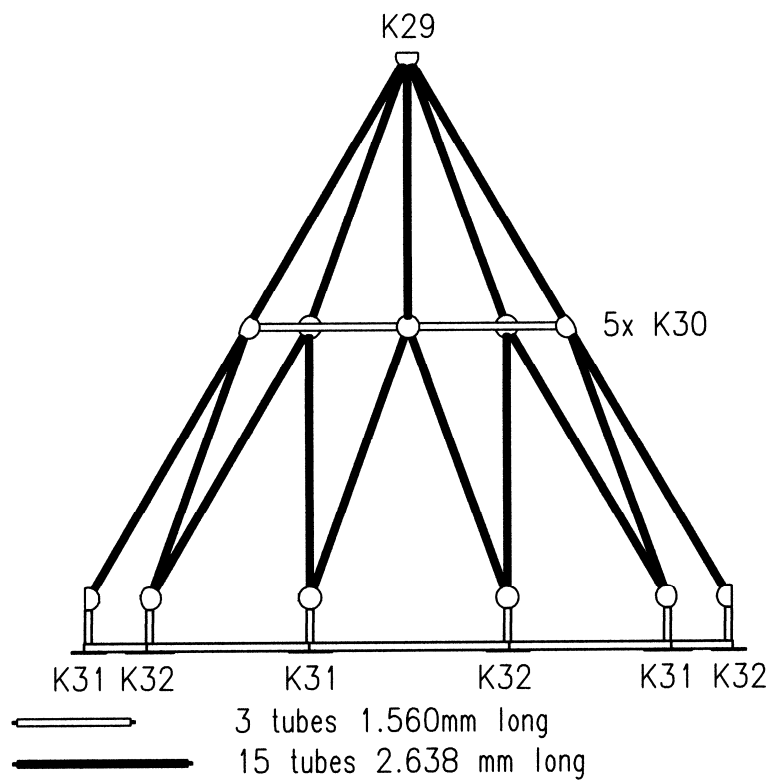
Figure 4

### 3. Assembling the equipment:

#### 3.1 Views of equipment



**Figure 9**  
 View from the top



**Figure 10**  
 Side view

#### 4. Space net:

##### 4.1 Unpacking the space net

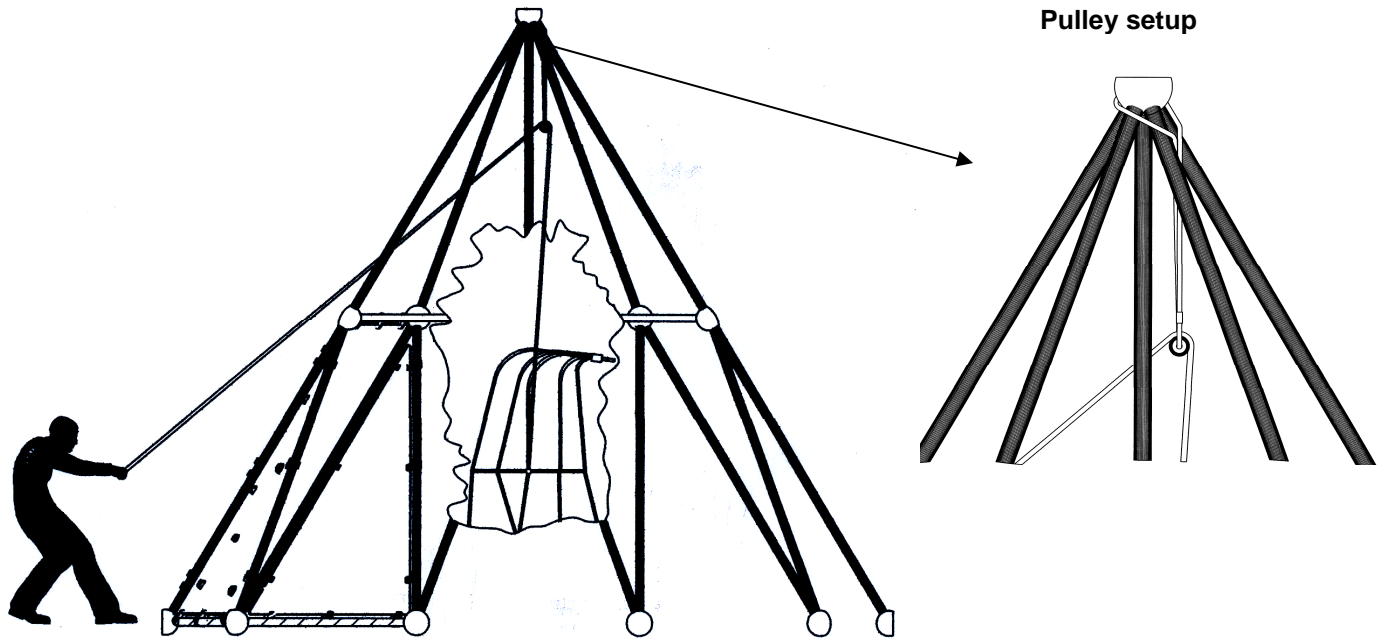


Figure 15

As shown in Figure 15, the space net is to be taken until it is vertically under the equipment top. The supplied pulley is to be secured on the K29 hollow ball as shown in the **pulley setup in Figure 15**. The space net can be hoisted out of the crate using the attached rope and assembled to the hollow ball connection **K29** with the preassembled nut M20 / SIZE 30 (which must firstly be completely loosened). Insertion of the tensioning cylinder and fork screws into hollow balls of **K30**, **K31** and **K32** can be simplified by tension support from the supplied rope. When securing the tension nut, care must be taken to ensure the correct alignment of the ropes and that they correspond to their run progression in the space net (**Figure 5**).

**Special attention should be given to space net alignment with Skyclimbers having additional elements such as net troughs and climber walls. Do not position seating troughs behind the climber panels because these can be hardly used!**

#### 4.2 Preassembly of the space net

Preassembly of the space net begins by screwing the tension systems into the hollow balls of **K30** (Figures 9, 10 and 16). In doing this, the tensioning cylinder is inserted into the telescopic sleeve with the M20 bolt and mounted from the inside with the tension nut M20 (Size 32) with approximately 5 turns of the thread. After this, the tension screws for hollow balls **K31** and **K32** (Figures 9 and 10) are made which also mount the tension rope via the fork screws (Figure 17).

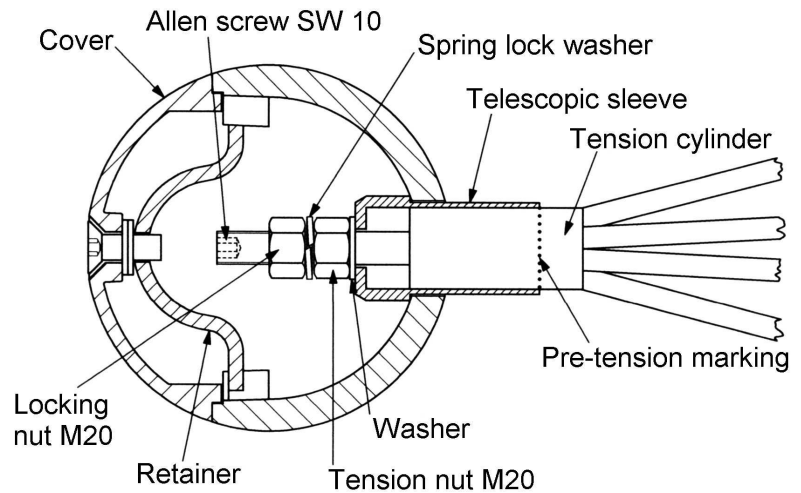


Figure 16

#### 4.3 Tensioning the space net

Firstly the aligned connection on the hollow ball **K29** is to be solidly secured. Tensioning of the space net begins on the hollow balls of **K31** and **K32** which are screwed to the locking nut (Figure 17) using the special spanner supplied. After doing this tensioning is made on **K30** hollow balls up to the marking (Figure 16). Finally, the space net must be under a **tension having an even strength throughout**.

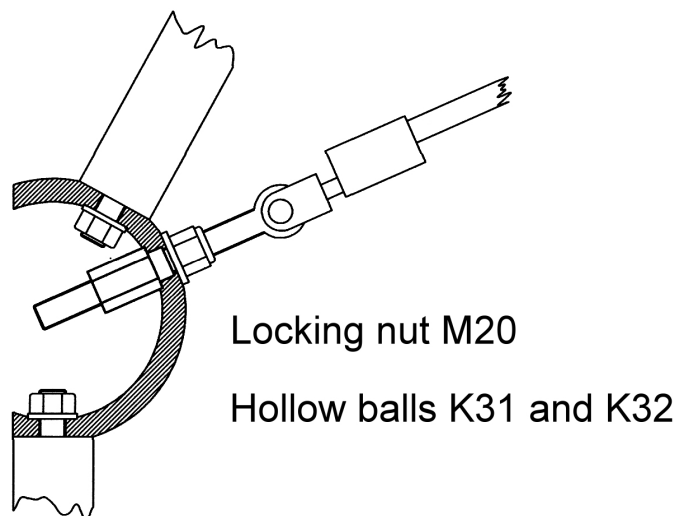


Figure 17

#### Remember!

It is imperative that at **all tension points**, the ropes under tension **do not turn**. If necessary counter this with a suitable tool.

#### 4.4 Securing the space net

After tensioning, the tension nuts are to be locked on all **K30 knot points** using the locked nuts and spring lock washer provided (M20 Size 32). **In order to tighten the locking nut, the Allen key Size 10 must be inserted into the M20 screw and held (Figure 16).** The locking nuts Size 30 (**Figure 17**) are to be inspected once again to ensure that they are solidly secure at the **K31 and K32 knot points**. Finally all knot points from **K29 to K32** are to be closed by screwing the knots with the prepared covers via a clamping screw (**Figure 16**). In doing this please ensure that the cover is positioned evenly so that our company logo is readable. Thank you.

#### Remember to re-tension!

**The first re-tension of the space net is to be made already after one to two weeks of use (refer to the operative inspection for the procedure).**

### 5. Maintenance instructions EN 1176-1:

#### 5.1 Visual routine inspection

The frequency of inspections should be oriented on local conditions (high or low amount of use, vandalism, air contamination, weather effects etc.).

The space net and the hammock are to be checked for damage, especially breaks in the wire.

The climber panels as well as the climber grips are to be checked for damage (e.g. cracks).

All fixtures of the climber panels and the climber grips are to be checked.

It is to be ensured that all hollow balls are closed.

The clamps of the climbing plates should be tight. In case the screw connection is loose, please tighten it.

Check the climbing holds for tightness or damage. If the screw connection is loose, please tighten it. Replace the climbing holds in case of any damage.



## 5.2 Operative inspection (half yearly)

- The first re-tensioning must be carried out after one to two weeks. Re-tensioning is made via the tension nuts (M 20) in the hollow balls. Firstly the **balls K31 and K32** are re-tensioned. After removing the cover using an Allen key Size 10 and loosening the locking nut M20 Size 30 (Figure 17) on the outside of the ball, the inside tension nut Size 30 is re-tensioned with the box spanner. It is imperative that the **locking nuts** be solidly tightened **after re-tensioning**. After this, further re-tensioning is made at the **K30 knots** and should be carried out evenly. In doing this the inside locking nut M20 Size 32 is loosened after removing the cover and re-tensioned at the tension nut M20 Size 32 **beyond the pre-tension marking** using the special box spanner supplied. After re-tensioning, the tension nuts on the K30 knots must be **locked again** with the locking nuts. **Please note to the spring lock washer between the nuts. In order to loosen and secure the tension nut and locking nut M20 Size 32, the bolt M20 can be held with an Allan key Size 10 (Figure 16).** Finally the open hollow ball is once again closed with the cover. Please ensure that the cover is placed evenly so that our company logo is readable. Thank you.

### Remember!

It is imperative that at **all tension points the ropes under tension do not turn**. If necessary counter this with a suitable tool.

Further re-tensioning will be required once or twice more until rope expansion is fully spent.

## 5.3 Main inspection (yearly)

**In addition to the tests concerning visual and operative inspection:**

- Checking the anchor frame for excessive corrosion (every two years). The anchor frame is to be laid bear at the corner points down to the construction depth and to be checked for corrosion.
- Checking the tube screw joints to ensure solid and gap-free seating on the hollow balls. If a screw has become loose then this is to be re-tightened in the inside of the ball.
- Check the locking nuts (**Figure 17**) to ensure solid seating at the **K31 and K32** hollow balls.
- Checking the tension system for damage.
- Checking the slide supports, especially the ramp, for solid anchoring.
- Checking the hammock post at the base to the foundation for any signs of corrosion.