

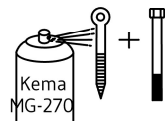
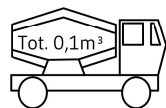
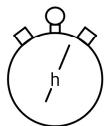
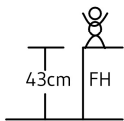
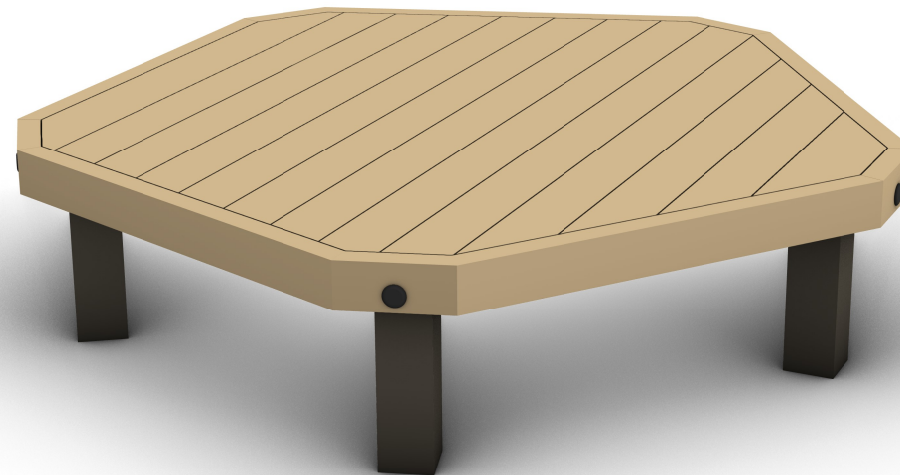
# ORG7071CY Junglebane - Plateau femkant eg

Date: 2022.01.00 Subject: View  
Rev: 2023.01.02 Drawing no.: ORGxxxxA\_00  
Page nr.: 1/5 Scale: None  
Paper: A4 Drawing by: Furkan Biceroglu

## Mounting

Copyright Elverdal A/S.

# Elverdal



EN 1176



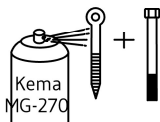
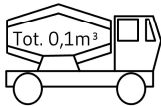
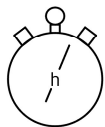
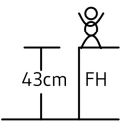
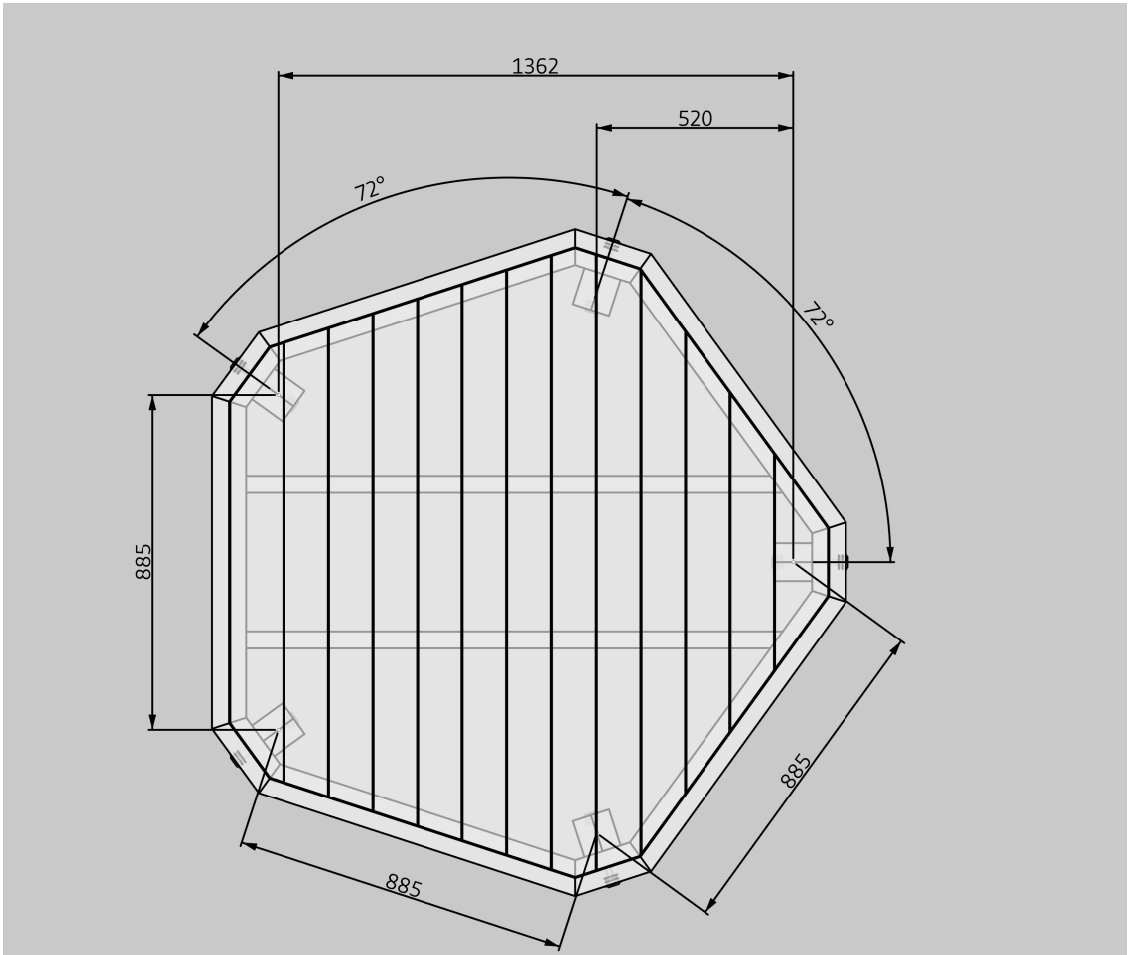
### INFO

VIGTIGT: Hele anlægget skal samles før der støbes beton  
IMPORTANT: The entire facility must be assembled before mould in concrete  
WICHTIG: Die Anlage muß komplett montiert sein, bevor das Fundament  
betoniert wird

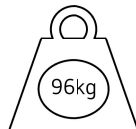
# Mounting

Copyright Elverdal A/S.

Elverdal



EN 1176



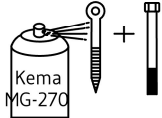
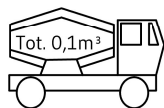
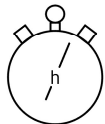
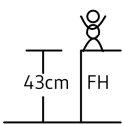
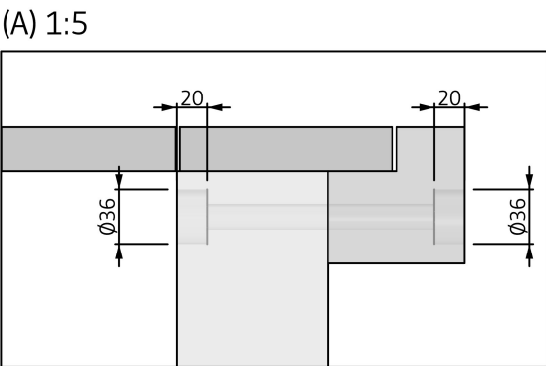
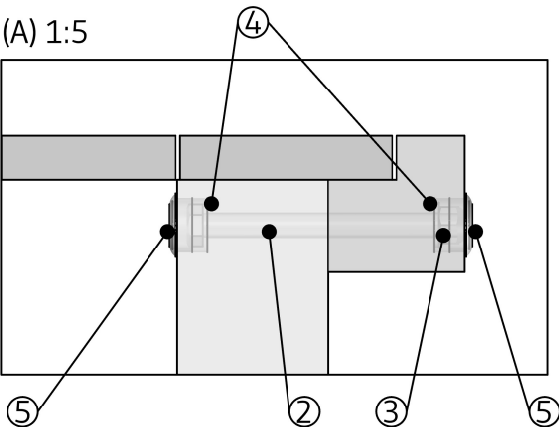
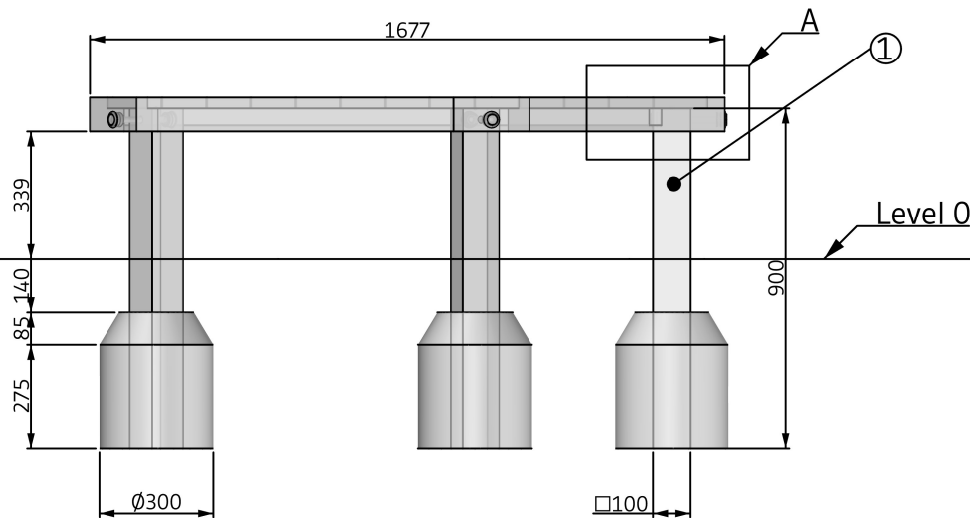
## INFO

VIGTIGT: Hele anlægget skal samles før der støbes beton  
IMPORTANT: The entire facility must be assembled before mould in concrete  
WICHTIG: Die Anlage muß komplett montiert sein, bevor das Fundament  
betoniert wird

# Mounting

Copyright Elverdal A/S.

Elverdal



EN 1176



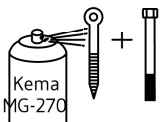
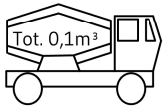
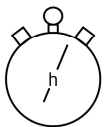
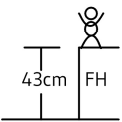
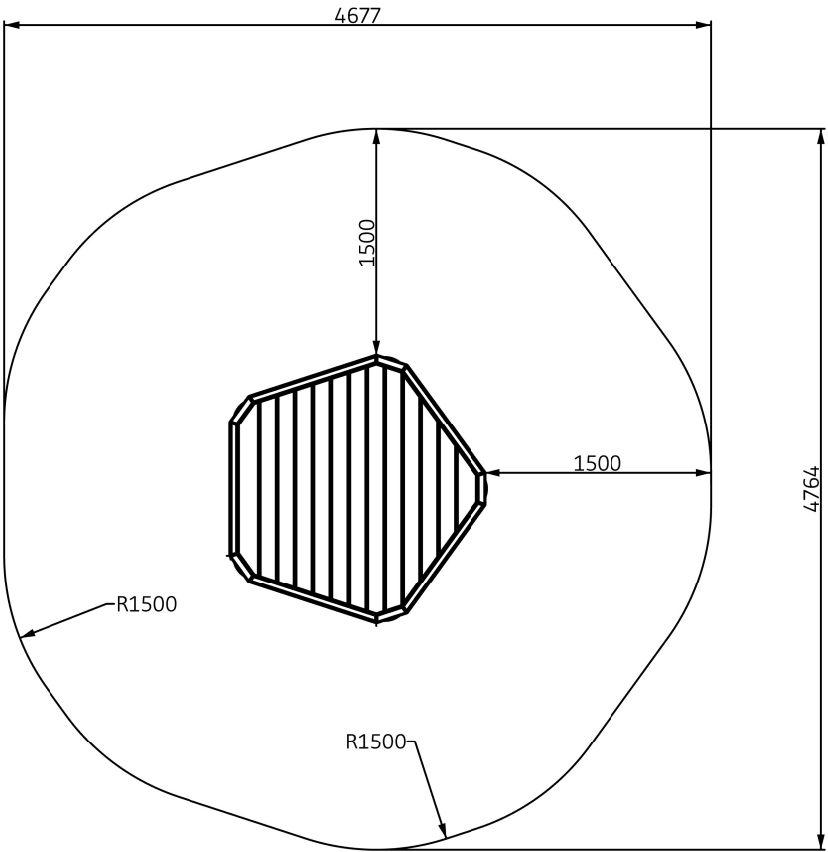
## INFO

VIGTIGT: Hele anlægget skal samles før der støbes beton  
IMPORTANT: The entire facility must be assembled before mould in concrete  
WICHTIG: Die Anlage muß komplett montiert sein, bevor das Fundament  
betoniert wird

# Mounting

Copyright Elverdal A/S.

Elverdal



EN 1176



INFO

VIGTIGT: Hele anlægget skal samles før der støbes beton  
IMPORTANT: The entire facility must be assembled before mould in concrete  
WICHTIG: Die Anlage muß komplett montiert sein, bevor das Fundament  
betoniert wird

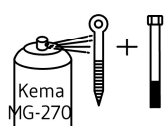
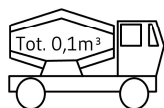
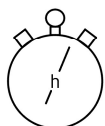
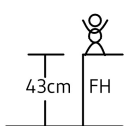
Date:	2022.01.00	Subject:	BOM
Rev:	2023.01.02	Drawing no.:	ORGxxxxA_00
Page nr.:	5/5	Scale:	None
Paper:	A4	Drawing by:	Furkan Biceroglu

# Mounting

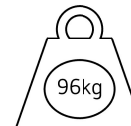
Copyright Elverdal A/S.

# Elverdalen

ORG7071CY Junglebane - Plateau femkant eg	ORG7071CY Jungle course - Plateau pentagonal oak	ORG7071CY Jungle Parcours - Plateau Fünfeck Eiche
---	--	---

[illegible]

EN 1176



INFO

**VIGTIGT:** Hele anlægget skal samles før der støbes beton  
**IMPORTANT:** The entire facility must be assembled before mould in concrete  
**WICHTIG:** Die Anlage muß komplett montiert sein, bevor das Fundament  
 betoniert wird