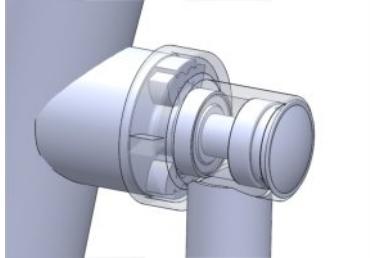


System components

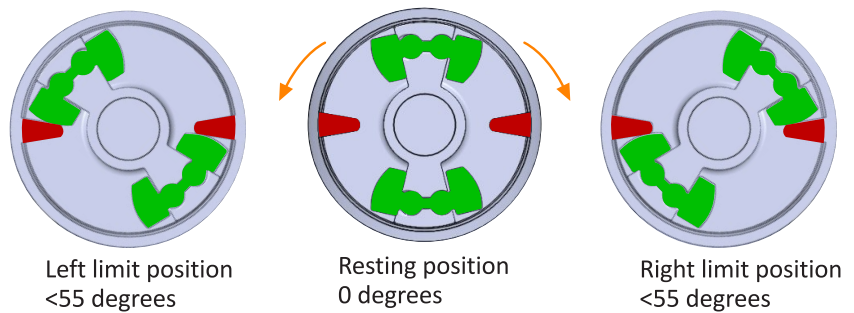


Urbanix safety stopper system consists of several components,

1. Enclosed cast metal housing
2. Cast iron stopper mechanism
3. Polyamide custom Safeshock pads, Curved to reduce shock

How it limits the movement ?

The red pin is integrally cast and static, the green Polyamide is cushioning a possible hit from over extension of the leg, and stops unsafe motion or loss of balance. The standard comply to a stopping angle smaller than 55 degrees.



Unique selling point and advantages

Safety

Completely cast in system, which prevent any crash points and reduce vandalism. In addition to geometrically shaped dampen cushions to avoid an abrupt hard stop.

Strengths	Limitations
Outstanding stiffness, fatigue and creep resistance, up to 220°C	High water absorption and water equilibrium content
Excellent abrasion and friction behavior	High temp processing, due to high melting point
Very good flow for easy processing and quick molding cycle	Attacked by strong mineral acids and absorbs polar solvents
Excellent fuel and oil resistance	Proper drying before processing is needed
Good impact strength	Darkens with exposure to high heat
Very low flash	Low dimensional stability
High resistance against energy radiation	